



The Safex Condom Demonstrator

The Safex Condom Demonstrator has been produced for use by those whose educational role involves demonstrating the correct method of applying a condom.

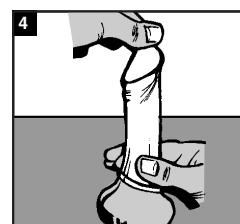
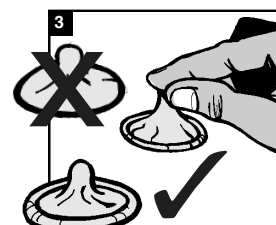
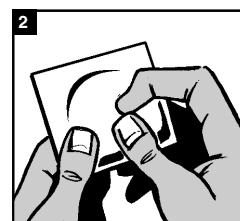
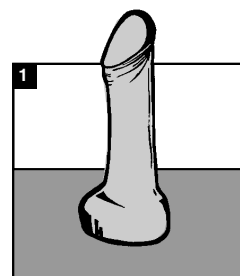
The Safex Condom Demonstrator, designed to be anatomically correct, is made from a firm yet flexible, lifelike rubber, closely simulating the human penis.

Instructions for use

- 1** Place the Demonstrator with its base on a firm, flat surface.
- 2** Carefully tear off one end of the condom foil pack ensuring that you do not damage the condom. Remove the condom from the pack, avoiding contact with finger nails or jewellery.
- 3** Hold the closed (reservoir) end of the condom between thumb and forefinger to expel any air from the tip, making sure that the part to be unrolled is on the outside.
- 4** Still holding the reservoir tip, place the condom over the 'head' of the Demonstrator and unroll the condom down the entire length of the Demonstrator with your other hand.

Please note

The above guidelines should be used in conjunction with the more comprehensive instructions which should accompany all packs of condoms.



Supporting **Safer Sex**

© Safex Supplies Ltd 1998 - This document may be freely copied and distributed.
This product is designed solely for educational instruction.

Please turn over for instructions on our Ejaculation Condom Demonstrator.



The Safex Condom Demonstrator - Ejaculating

Instructions for use

- 1** Detach the syringe from the plastic tube.
- 2** Insert the tip of the syringe in to the jar of Artificial Semen.
- 3** Withdraw the syringe plunger and fill the syringe.
- 4** Connect the syringe to the tube.
- 5** Apply a condom to the Demonstrator in the usual way (as shown overleaf).
Depress the syringe plunger.
- 7** Use the demonstrator to show the correct method of removal of the condom without spillage.
- 8** After use, carefully clean the demonstrator and flush through the syringe and tube with warm water in order to remove any residual artificial semen.

Please note

The above guidelines should be used in conjunction with the more comprehensive instructions which should accompany all packs of condoms.



Supporting **Safer Sex**

© Safex Supplies Ltd 1998 - This document may be freely copied and distributed.
This product is designed solely for educational instruction.

Please turn over for instructions on our Standard Condom Demonstrator.