

Safex

condom demonstrator



Anatomically correct, firm yet flexible.

Code No. FCD3 (flesh) or BCD3 (blue)

Anatomically designed and made from firm yet flexible PVC, the **SAFEX Condom Demonstrator** (right) closely resembles the human penis and is an invaluable aid for teaching the correct application of the male condom.

Code No. FCD3E (flesh) or BCD3E (blue)

Our very latest demonstrator (above) is an excellent aid for teaching the correct application and subsequent safe removal of the male condom following ejaculation.

Use only with SAFEX Artificial Semen.



Artificial semen

For use with ejaculating demonstrator model F/BCD3E.



Lubricant

A greaseless, non-sterile, waterbased, water soluble and non-irritating lubricant. Suitable for gynaecological use or when additional vaginal lubrication is needed.

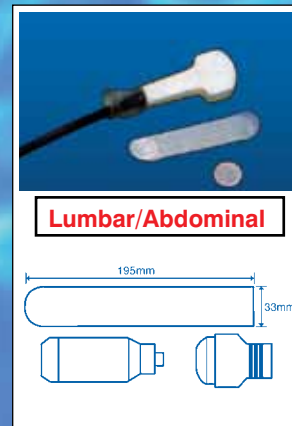
Available in 5gm sachets



Safex

latex diagnostic probe covers

The range comprises of 2 natural latex covers, without lubrication or teat. Shaped to fit most diagnostic probes, the covers are for rectal/vaginal and lumbar/abdominal inspection. In individual foil sachets with 144 to a box.



Safex has supplied quality condoms to the NHS for a number of years. The quality of our products, together with the reliability and promptness of our service is unsurpassed.

manufacture

Safex condoms are made to CE & ISO 4074: 2002 standards at a modern condom manufacturing plant.

quality

Safex condoms are made from premium quality, hypoallergenic natural rubber latex and are accredited with the BSI Kitemark and European CE mark.

cost

Compare Safex prices with those of the other leading condom suppliers - you will see that Safex condoms represent exceptional value for money.

minimum order

There are no minimum order requirements, however carriage charges apply to orders of less than 10 gross or to the value of £100.00 excluding VAT.

delivery

An unbeatable service with most orders delivered within 4 working days unless otherwise notified by our very reliable courier service.



NHS & TRADE

BUYERS GUIDE



Safex House, Church Street, Audley, Stoke on Trent ST7 8DE, England
Telephone 01782 723399 Fax 01782 723366 Email safex@safex.co.uk



www.safex.co.uk

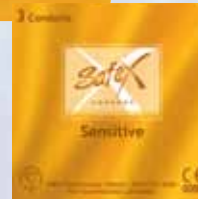
CE0086

Safex

CONDOMS

sensitive

An exceptionally fine sheath for increased sensitivity. The Sensitive has a deposit area and is non-spermi- cally lubricated.



Available in packs of 3, 12 & 144 clinic

max extra large

A larger condom for greater comfort. With deposit area. Non-spermi- cally lubricated.



Available in packs of 3 & 144 clinic

fantasy ribbed

The fine ribbed texture of the Fantasy Ribbed enhances sensitivity and pleasure. With deposit area and is non-spermi- cally lubricated.



Available in packs of 3, 12 & 144 clinic

forte extra

The Safex Forte Extra condoms are manufactured to a higher bursting volume and pressure test than standard condoms. With a deposit area and non-spermi- cally lubricated.

* Safex Forte Extra is a replacement name for Safex Forte Extra Strong. Safex Forte Extra condoms are manufactured to the same quality standards as Extra Strong condoms.



Available in packs of 3 & 144 clinic

flavoured

Natural condom with flavours. 3 pack includes strawberry, mint and chocolate flavours.* With deposit area and is non-spermi- cally lubricated.

*Clinic and 12 packs contain strawberry, banana, mint and chocolate flavours.



Available in packs of 3, 12 & 144 clinic

clinic packs

All Safex condoms are available in easily identifiable colour coded clinic packs of 144.

natural non spermicide

The sheath is made of natural premium quality latex with a deposit area and is non-spermi- cally lubricated.



Available in packs of 3, 12 & 144 clinic

delay for extended pleasure

The non spermicidal lubricant used in the Delay contains an active ingredient which delays ejaculation. With a deposit area.



Available in packs of 3, 12 & 144 clinic



All Safex Condoms are manufactured using hypoallergenic natural rubber latex.

Safex House, Church Street, Audley, Stoke on Trent ST7 8DE, England Telephone 01782 723399 Fax 01782 723366 Email safex@safex.co.uk internet <http://www.safex.co.uk/>

